



Sea View , Portland DT5 1AA

- Fabulous Portland Cottage
- Character Features Throughout
- Lounge & Separate Dining Room
- Beautiful Bathroom with Rolltop Bath & Independent Shower Cubicle
- Front Garden with Feature Lego Wall
- Wonderful Sea Views to the Rear
- Two Double Bedrooms plus Loft Room
- Modern Fitted Kitchen & Lower Ground Utility / Store Room
- Gas Central Heating & Double Glazing
- Westerly Aspect Courtyard Garden

Asking Price £290,000 Freehold





Location

LOWER GROUND FLOOR

Utility Room

7'0" x 9'8"

GROUND FLOOR

Lounge

Dining Room

12'3" max x 12'3" max (max x max)

Kitchen

8'3" x 11'9"

Balcony

7'2" x 6'6"

FIRST FLOOR

Bedroom One

12'1" max x 12'5" max (max x max)

Bedroom Two

8'4" x 11'10"

Bathroom

7'1" max x 12'7" max (max x max)

Balcony

7'0" x 3'3"

SECOND FLOOR

Loft Room (Currently Utilised as the Main Bedroom)

12'5" max x 13'9" max (max x max)

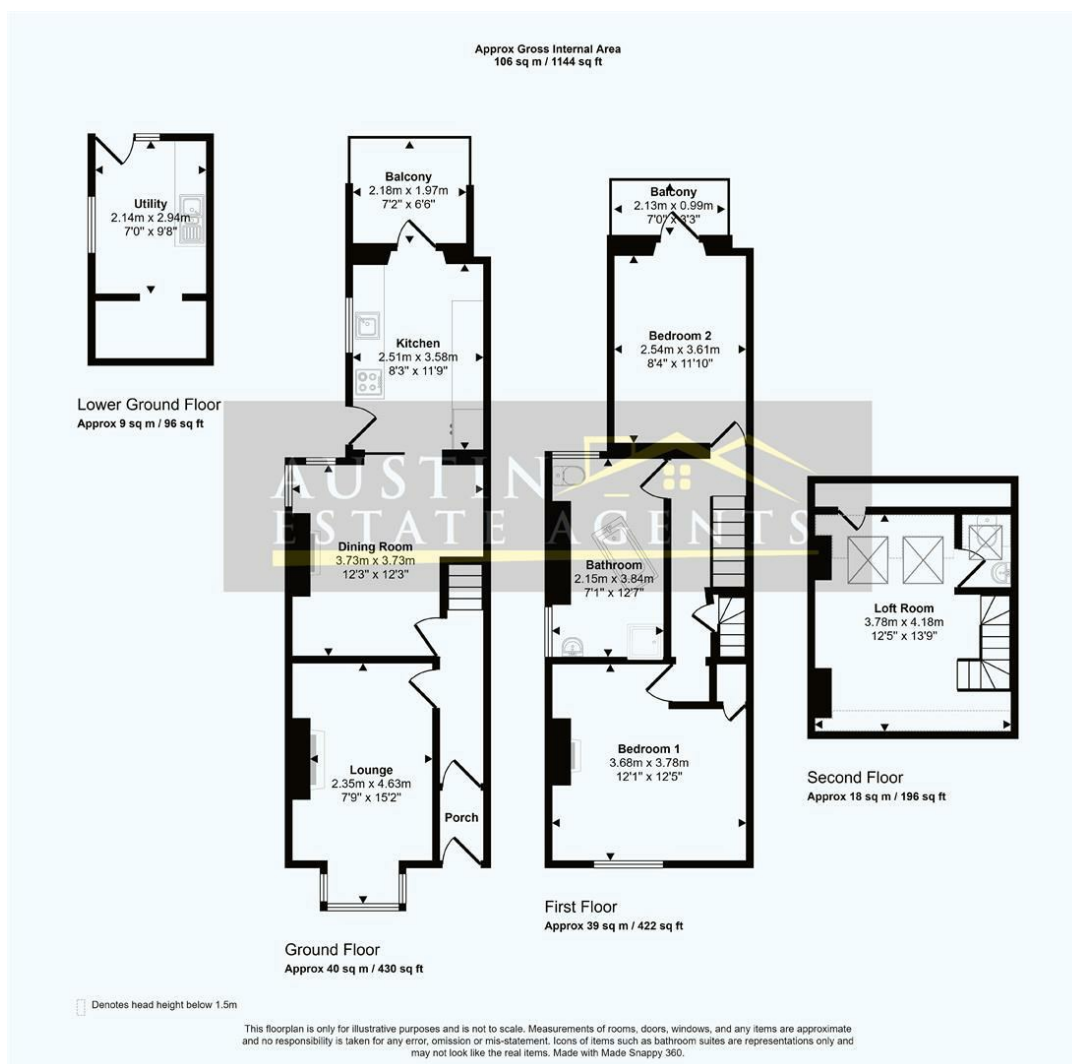
OUTSIDE

Front Garden

Rear Garden



Local Authority
Council Tax Band B
EPC Rating D



Weymouth Office

115 Dorchester Road, Weymouth,
Dorset, DT4 7JY

Contact

01305 858470
info@austinpropertyservices.co.uk
austinpropertyservices.co.uk

Agents Note: Whilst every care has been taken to prepare these particulars, they are for guidance purposes only. All measurements are approximate and for general guidance purposes only and whilst every care has been taken to ensure accuracy, they should not be relied upon and potential buyers/tenants are advised to recheck the measurements.